

PARKVIEW

Property services since 1985

2nd Floor, 11 Heath Drive, London NW3 7SN t : 020 7431 3371 f : 020 7431 6343 e : home@parkviewUK.com

OVINGTON SQUARE LONDON SW3

Gross internal area (approx.)
440 Sq m (4739 Sq ft)

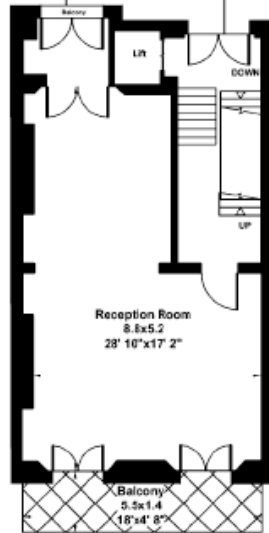


Lower Ground Floor

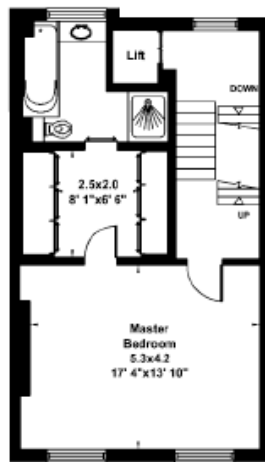


Upper Ground Floor

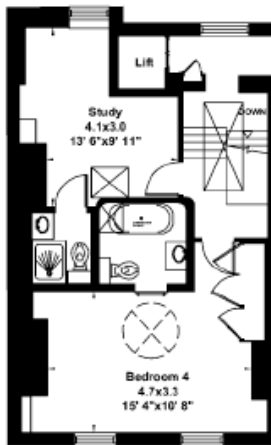
Gross internal area (approx.)
440 Sq m (4739 Sq ft)



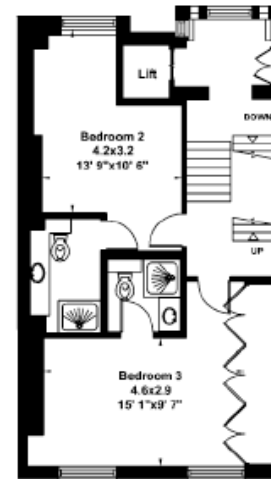
First Floor



Second Floor



Fourth Floor



Third Floor