

OVINGTON SQUARE LONDON SW3

Situated on one of Knightsbridge's most prestigious garden squares, this family house has undergone complete refurbishment. The property comprises a swimming pool and gym area and lift including a separate nanny flat with its own entrance and utility room on the Lower Ground Floor. The ground floor is an open-plan reception space, leading into a modern eat-in kitchen with direct patio access. The first floor consists entirely of reception space, leading onto further decked terrace. The property also comprises a large master bedroom suite, as well as five further bedrooms with five bathrooms.

**SWIMMING POOL AND GYM AREA : SEPARATE NANNY FLAT WITH OWN
ENTRANCE : UTILITY ROOM : OPEN-PLAN RECEPTION : EAT-IN KITCHEN :
PATIO : SECOND RECEPTION SPACE : FURTHER DECKED TERRACE : LARGE
MASTER BEDROOM SUITE : FIVE FURTHER BEDROOMS : FIVE BATHROOMS : LIFT**



£11,500,000 Subject To Contract



Terms and Conditions

Tenure: Freehold

Price : £11,500,000 Subject To Contract

Misrepresentation Act 1967

The information in this publication should be referred solely as a general guide. Whilst care has been taken in its preparation, no representation is made nor responsibility accepted for the whole or any part. All descriptions, dimensions, reference to condition and other details are believed to be correct but intending purchasers should satisfy themselves by inspection or otherwise as to the correctness of each of them.

Gross internal area (approx.)
440 Sq m (4739 Sq ft)

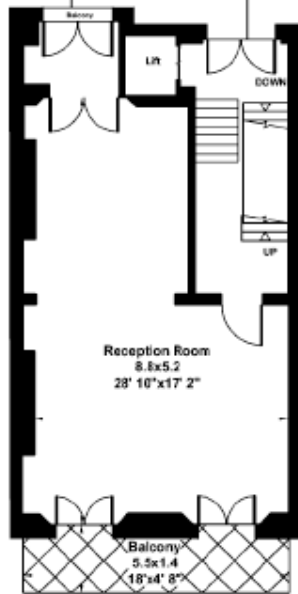
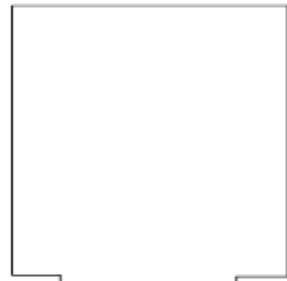


Lower Ground Floor

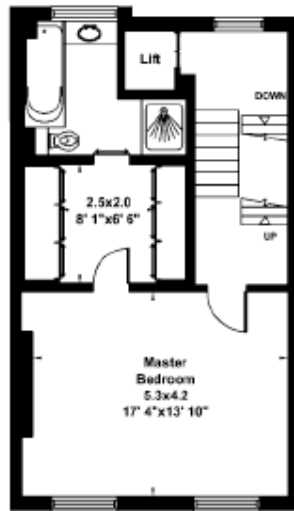


Upper Ground Floor

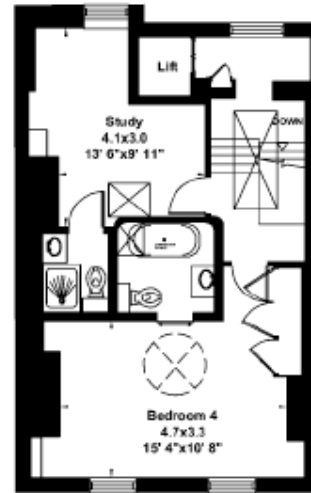
Gross internal area (approx.)
440 Sq m (4739 Sq ft)



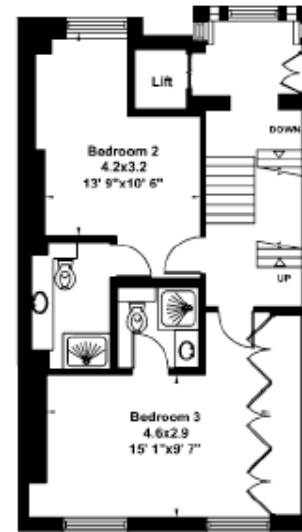
First Floor



Second Floor



Fourth Floor



Third Floor